



RubbaFIX[®]

CASE HISTORY

EDGE REPAIR



PROBLEM DESCRIPTION

- Total repair time 2 hours using RubbaFIX®, including isolations.
- Repair usually done with hot press taking 6 hours.
- Edge damage measuring approximately 150mm wide, 30mm thick and 150mm towards centre of belt.



SOLUTION

- Edges chamfered to maximise adhesion surface.
- Area buffed with wire wheel and wiped clean.



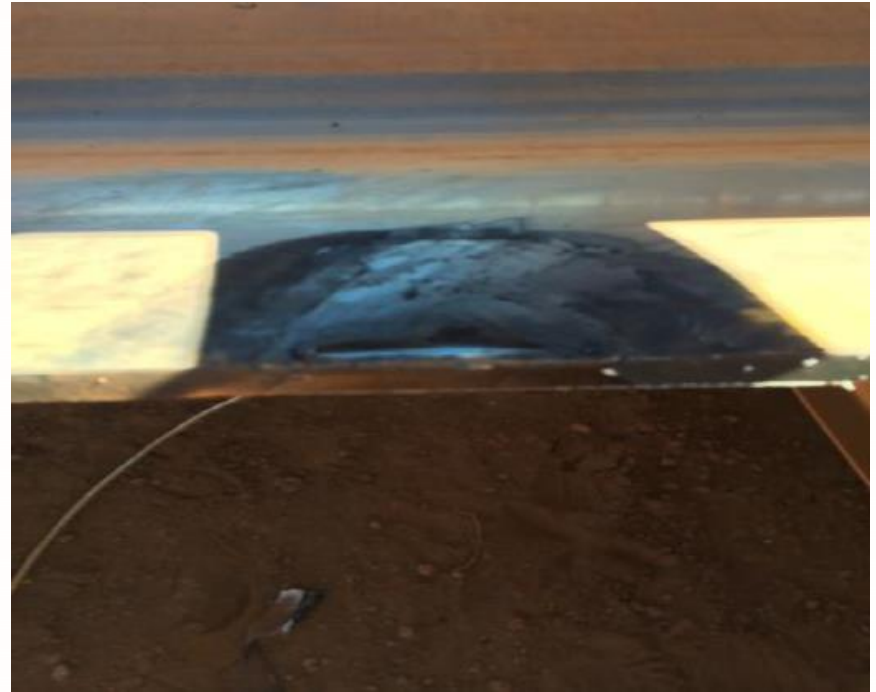
SOLUTION

Mould created using heavy duty tape, ready to be filled. This ensured consistent surface coverage on under side of belt.



RESULTS

- Repair completed using 300 grams of RubbaFIX[®] compound.
- After 30 minutes tape was removed and repair lightly buffed to ensure no unwanted contact with belt scrapers.



SUMMARY

INDUSTRY : Iron Ore Mining

PRODUCT : RubbaFIX® and MELTA® Pro Applicator

PLANT : Port Facility

LOCATION : Pilbara region, Western Australia

DATE : May 2014

SUMMARY : Edge Repair

ROI : 4 hours production time saved

CONTACT US

Let us help you find out how our rubber products can improve your operations and save you time and money.

Toll free	: 1800 352 228
International	: +61 2 8853 3000
Email	: info@rubbafix.com.au
Website	: www.rubbafix.com.au